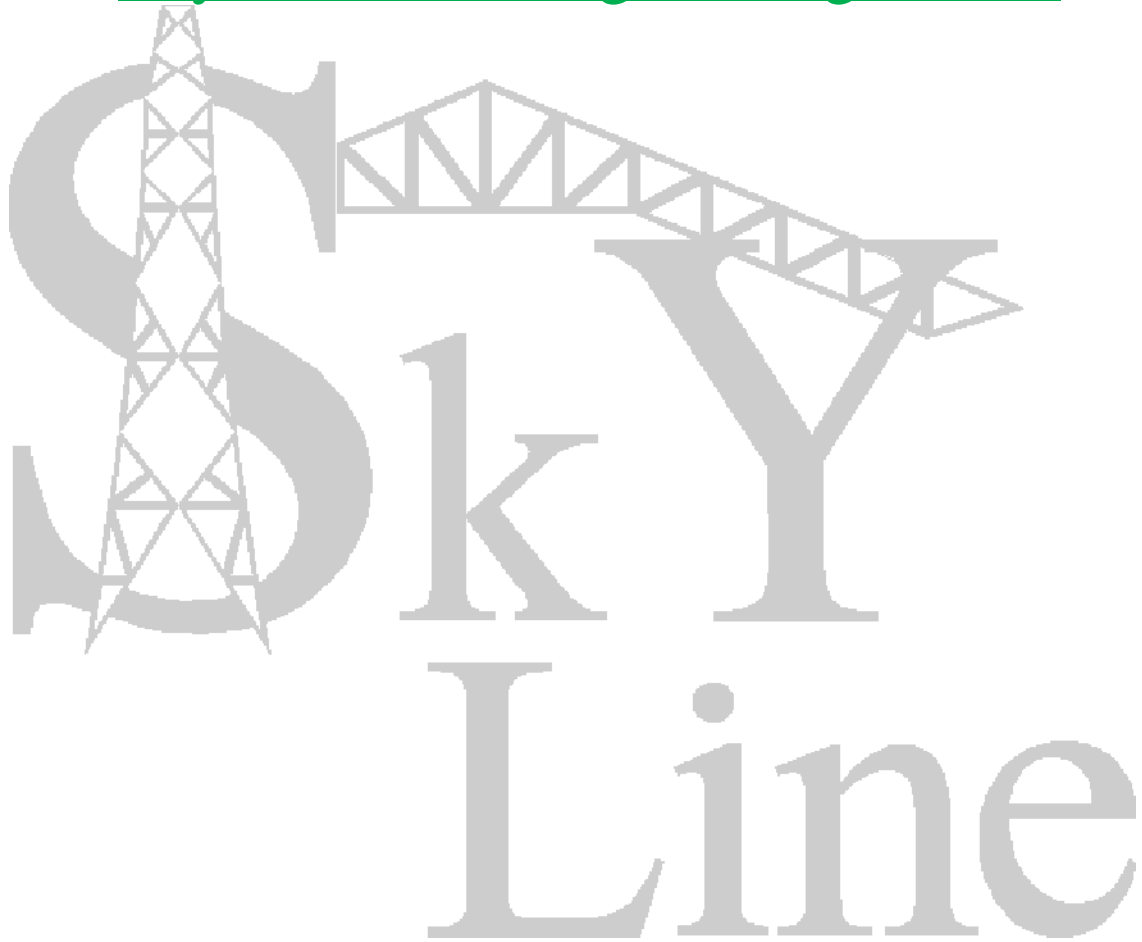


Skyline Metal Engineering Works



COMPANY PROFILE

[Skyline Metal Engineering Works](#)
[Harisiddhi-7, Lalitpur, Nepal](#)
[Ph: 01-5014686 \(Factory\)](#)
[Ph: 01-5532638 \(Office\)](#)

Introduction

Skyline Metal Engineering Works is an emerging Fabrication Company fully energetic & showing its capabilities in the sectors of Steel Structures. The company facilitates designing, fabrication, and installation of all kinds of Steel Structure Works such as Steel Bridges, Towers, Truss Sheds, Steel Frame Structures, and others etc.

As a result of our continuous pursuit for recognition and devoted customer service since the establishment we have secured the confidence and appreciation of our clients. We have qualified and technically skilled staff such as Civil Engineers, Structural Engineers, Mechanical Engineers, Technicians, Welders, Assemblers, Skilled workers etc. We provide all facilities to the workforce as and this setup has proved to be the strategy of our persistent success.

Engineering and Technical Department

The Technical and Engineering Department of _ Skyline Metal Engineering Works is supported by Pro-tech Consultancy situated at Satdobato, Lalitpur, Nepal.

Skyline Metal Engineering Works at a glance

Year of Establishment: 2008

Location: Harisiddhi-7, Lalitpur, Nepal

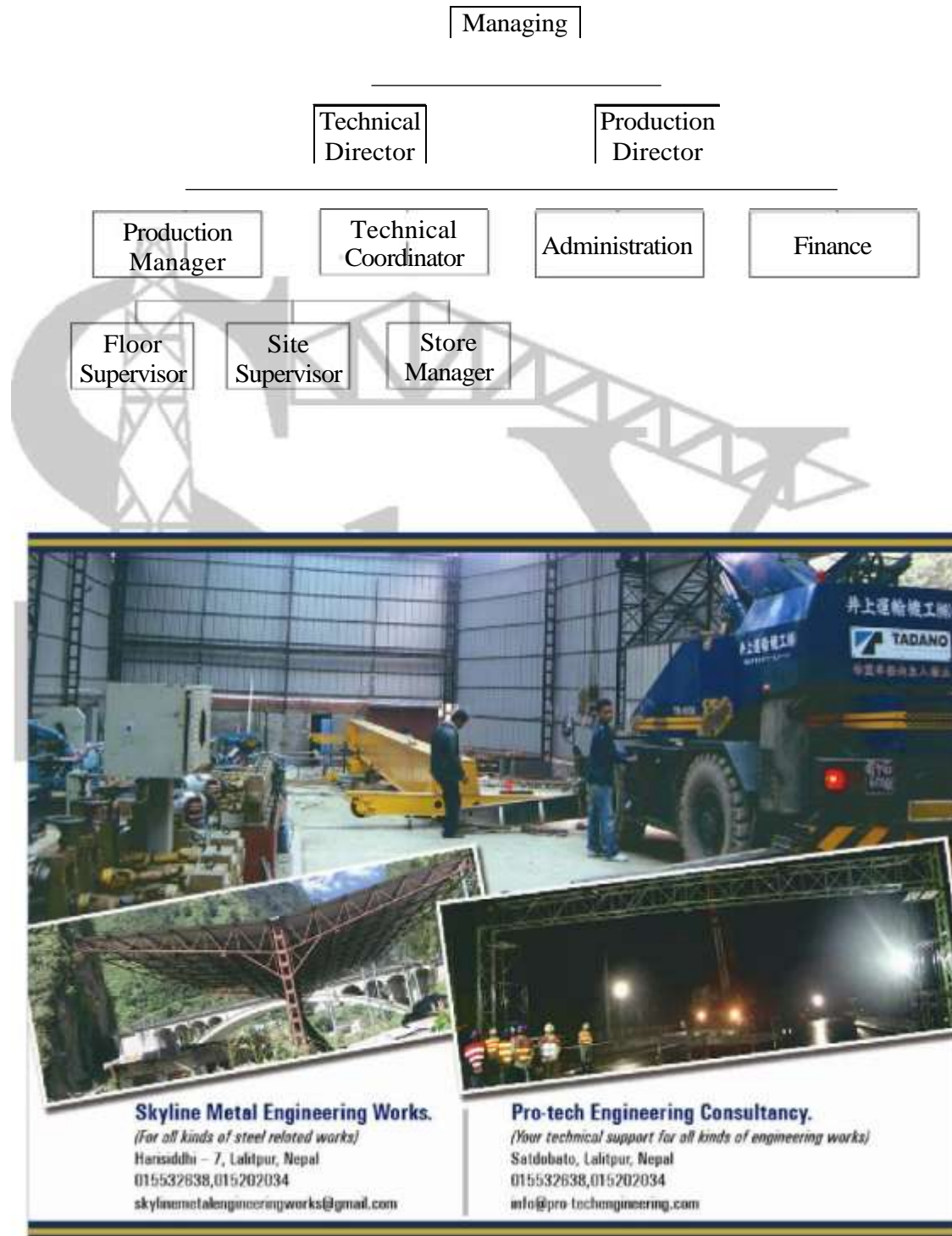
Contact No: Factory: 01-5014686

Office: 01-5532638

Email Address: skylinemetalengineeringworks@gmail.com

[Skyline Metal Engineering Works](#)
[Harisiddhi-7, Lalitpur, Nepal](#)
[Ph: 01-5014686 \(Factory\)](#)
[Ph: 01-5532638 \(Office\)](#)

ORGANIZATIONCHART



Director

[Skyline Metal Engineering Works](#)
[Harisiddhi-7, Lalitpur, Nepal](#)
[Ph: 01-5014686 \(Factory\)](#)
[Ph: 01-5532638 \(Office\)](#)

PARTNERS, DIRECTOR AND KEY PERSONNEL OF THE COMPANY

Board of Directors: -

S. No.	Name	Designation	Diploma/Degree
1	Santosh Kumar Gurung	Managing Director	MSc (Structural Engineering)
2	Sunil Gurung	Technical Director	BE (Civil Engineering)
3	Suman Rana	Production Director	

Key Personnel of the Firm: -

S. No.	Name	Designation	Diploma/Degree
1	Santosh Kumar Gurung	Managing Director	ME (Civil Engineering)
2	Sunil Gurung	Technical Director	BE (Civil Engineering)
3	Suman Rana	Production Director	
4	Santosh Poudel	Technical Coordinator	BE (Mech. Engineering)
5	Uttam Thapa	Administration Manager	I.Com
6	Kamal Thapa	Production Manager	
7	Kaji Rana	Store Manager	

Resource Personnel of the Firm: -

S. No.	Name	Designation
1	Kamal Thapa	Production Manager
2	Kaji Rana	Store Manager
3	Fulman Tamang	Asst. Store Manager
4	Puskal Thapa	Floor Supervisor
5	Tufan Chaudhary	Technician
6	Ram Saran Sigdel	Site Supervisor
7	Gambhir Moktan	Site Supervisor
8	Ram Kumar Lama	Senior Assembler
9	Kedar Magar	Senior Assembler
10	Dharma Raj Ghalan	Driver

S. No.	Name	Designation
11	Suresh Shrestha	Assembler/Welder
12	Subash Karki	Assembler/Welder
13	Raj Kumar Pulami	Assembler/Welder
14	Nawaraj Shrestha	Assembler
15	Nikesh Pradhan	Assembler
16	Sanjeev Rishidev	Assembler
17	Sujan Rana	Assembler
18	Rajan Rana	Assembler
19	Dev Bahadur Magar	Assembler
20	Dhan Bahadur Karki	Assembler
21	Dinesh Thapa	Assembler
22	Sunil K.C.	Painter
23	Kamala Timilsina	Cook

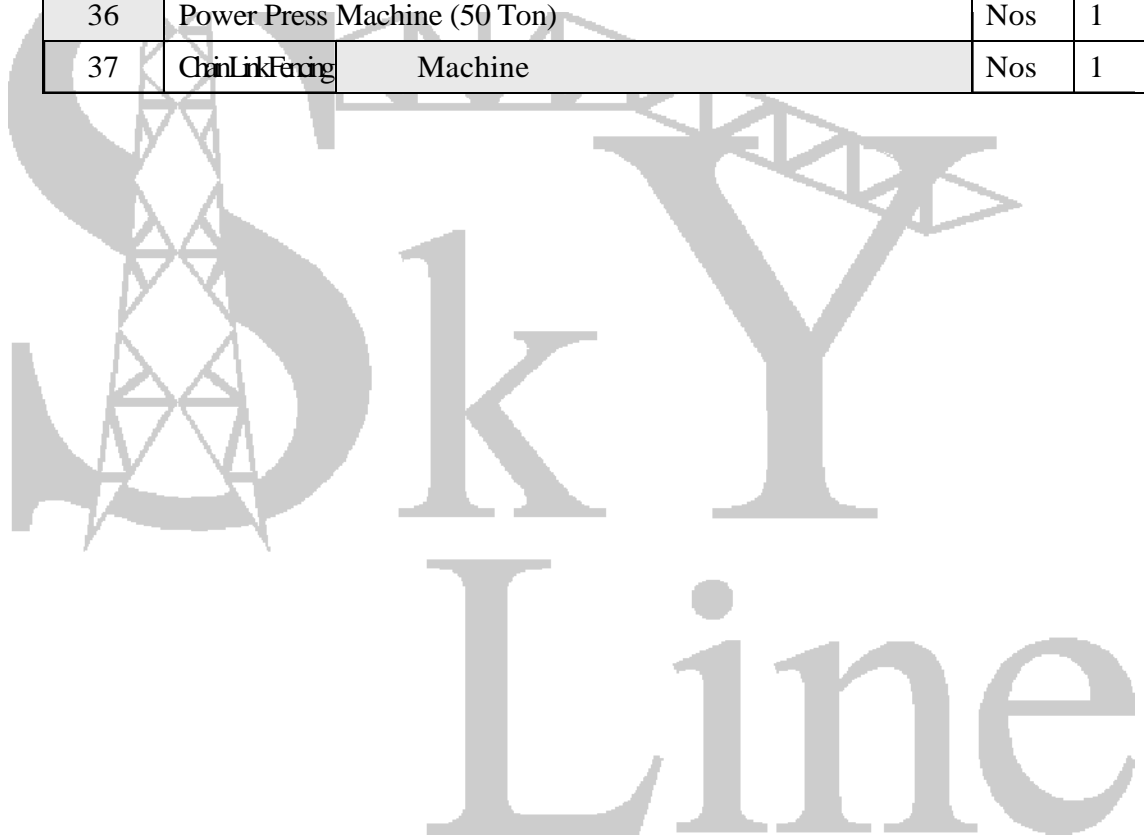
Advisors of the Firm: -

S. No.	Name	Designation	Diploma/Degree
1	Baburam Gurung	Advisor	MSc (Mechanical Engineering, University of Prague, Czechoslovakia) MSc (Work, Design & Ergonomics, Birmingham University, UK)
2	Suman Rajbhandari	Structural Engineer	MSc (Structural Engineering, Pulchowk Campus, Lalitpur, Nepal)

Equipments and facilities of the Firm: -

S. No.	Name of Items	Unit	Quantity
1	Main Office Building	Sq.ft	1089
2	Fabrication Yard	Sq.ft	13690
3	Desktop Computer (Pentium IV)	Nos	2
4	Laptop Computers	Nos	3
5	Printer (Canon LBP2900)	Nos	2
6	Printer (Samsung ML-1640 Series)	Nos	1
7	Printer (Samsung SCX-4521F)	Nos	1
8	Welding Machine (450 A)	Nos	4
9	Welding Machine (400 A)	Nos	1
10	Welding Machine (350 A)	Nos	3
11	Welding Machine (250 A)	Nos	1
12	Pipe Bending Machine (Hydraulic, up to 2 inches)	Nos	1
13	Pipe Bending Machine (Hydraulic, up to 4 inches)	Nos	1
14	Pipe Bending Machine (Electric, 5.5 Horsepower)	Nos	1
15	Pipe Bending Machine (Manual, up to 1 inch)	Nos	1
16	Cutting Machine (Fixed, 2.0 Horsepower)	Nos	1
17	Cutting Machine (Movable, 2.0 Horsepower)	Nos	1
18	Pipe Cutter	Nos	3
19	Grinding Machine (180mm)	Nos	3
20	Mini Hand Grinder (100mm)	Nos	8
21	Lathe	Nos	1
22	Sheet Rolling Machine	Nos	1
23	Stand Drill	Nos	2
24	Compressor Machine	Nos	2
25	Concrete Drilling Machine	Nos	1
26	Hand Drill Machine	Nos	9
27	Chain Pulley (3 Tons)	Nos	1
28	Lift Pulley	Nos	4

S. No.	Name of Items	Unit	Quantity
29	Hydraulic Jacks	Nos	3
30	Flame Cutting Sets (Manual)	Nos	2
31	Flame Cutting Sets (Automatic Pug)	Nos	1
32	Diesel Generator (63KVA)	Nos	1
33	Diesel Generator (16 KVA)	Nos	1
34	Diesel Generator (10 KVA)	Nos	1
35	Power Press Machine (10 Ton)	Nos	1
36	Power Press Machine (50 Ton)	Nos	1
37	Channel Rolling Machine	Nos	1

Skyline
Line

List of Projects Undertaken in the Past: -

S. No.	Project	Client	Description
1	Showroom Shed for Nissan at Pokhara	Bishwo Karma Auto Mart Pvt. Ltd.	Supply, Fabrication and Installation of Canopy Shed
2	N-Cell Towers	Access Engineering Consultancy Pvt. Ltd.	Installation of Towers
3	Truss Shed at Nuwakot	DWIDP	Supply, Fabrication and Installation of Truss Shed
4	Hyundai Laxmi Showroom Shed	Mahaju Construction	Supply, Fabrication and Installation of truss Sheds and Steel Platforms
5	Retrofitting works at UNHCR Maharajgunj	BK Shrestha & Builders Pvt. Ltd.	Supply, Fabrication and installation of Steel Jacketing for columns and Truss Shed
6	Lamjung Ropeway Project	Tokusima Friendship Nepal	Supply, Fabrication and Installation of Gondola and Additional Support
7	Retrofitting works at US Ambassador's Residence	BK Shrestha & Builders Pvt. Ltd.	Supply, Fabrication and installation of Steel Lintels and MS Grill Works
8	Melamchi Water supply Project	China Railway 15 Bureau Group	Fabrication of Lattice Girder for Tunnel
9	Mast Tower for Nepal Army	Era Import and Export Pvt. Ltd.	Supply, Fabrication and Installation of 30m Mast Tower

S. No.	Project	Client	Description
10	Chillar Plant for Hotel Yak & Yeti	Microtech M & E Pvt. Ltd.	Supply, Fabrication and Installation of Platform for Chillar Plant
11	Hotel Resort Reconstruction	Hotel Mount Monastery Pvt. Ltd.	Supply, fabrication and installation of Truss Shed
12	Maruti Workshop Extension Project	Shree Himalayan Enterprises Pvt. Ltd.	Supply, Fabrication and Installation of truss Sheds
13	Hulas Steel Industries	Hulas Steel Industries	Supply and fabrication of Solar Stand supports
14	The Project for Improvement of Kathmandu Bhaktapur Road	Hazama Corporation	Supply Fabrication and Installation of Overhead Type Girder Type Sign Board
15	The Project for Improvement of Kathmandu Bhaktapur Road	Hazama Corporation	Supply and Fabrication of L-Type Sign Board Post including repairing works of existing Posts
16	The Project for Improvement of Kathmandu Bhaktapur Road	Hazama Corporation	Supply Fabrication and Installation of Bus Stop Shed including Rest Bar
17	The Project for Improvement of Kathmandu Bhaktapur Road	Hazama Corporation	Supply Fabrication and Installation of Fence at Median up to 3172m including Excavation Works and Precast Works

S. No.	Project	Client	Description
19	Prime Minister Quarter Extension Project	Koshi and Neupane/ Bandan Bhagwati/ MM- J/V	Fabrication and Installation of Truss Shed including Roofing Works
20	The Project for Improvement of Kathmandu Bhaktapur Road	Hazama Corporation	Epoxy Painting Works at Manahara & Hanumante Bridge Guard Rails
21	N-Cell Tower Installation Works	Net Infra Pvt. Ltd.	Supply and Fabrication of Chain Link Fence including Sun Sheds
22	Kusum Oil Industries Truss Shed	Kusum Oil Industries	Fabrication and Installation of Truss Shed
23	GI Pipe Railing Works	Rupa/Gita- J/V	Fabrication and Installation of GI Railings
24	Kathmandu-Bhaktapur Road Extension Project	Department of Roads	Supply Fabrication and Installation of Median Fence up to 3515m including Excavation and Precast Works